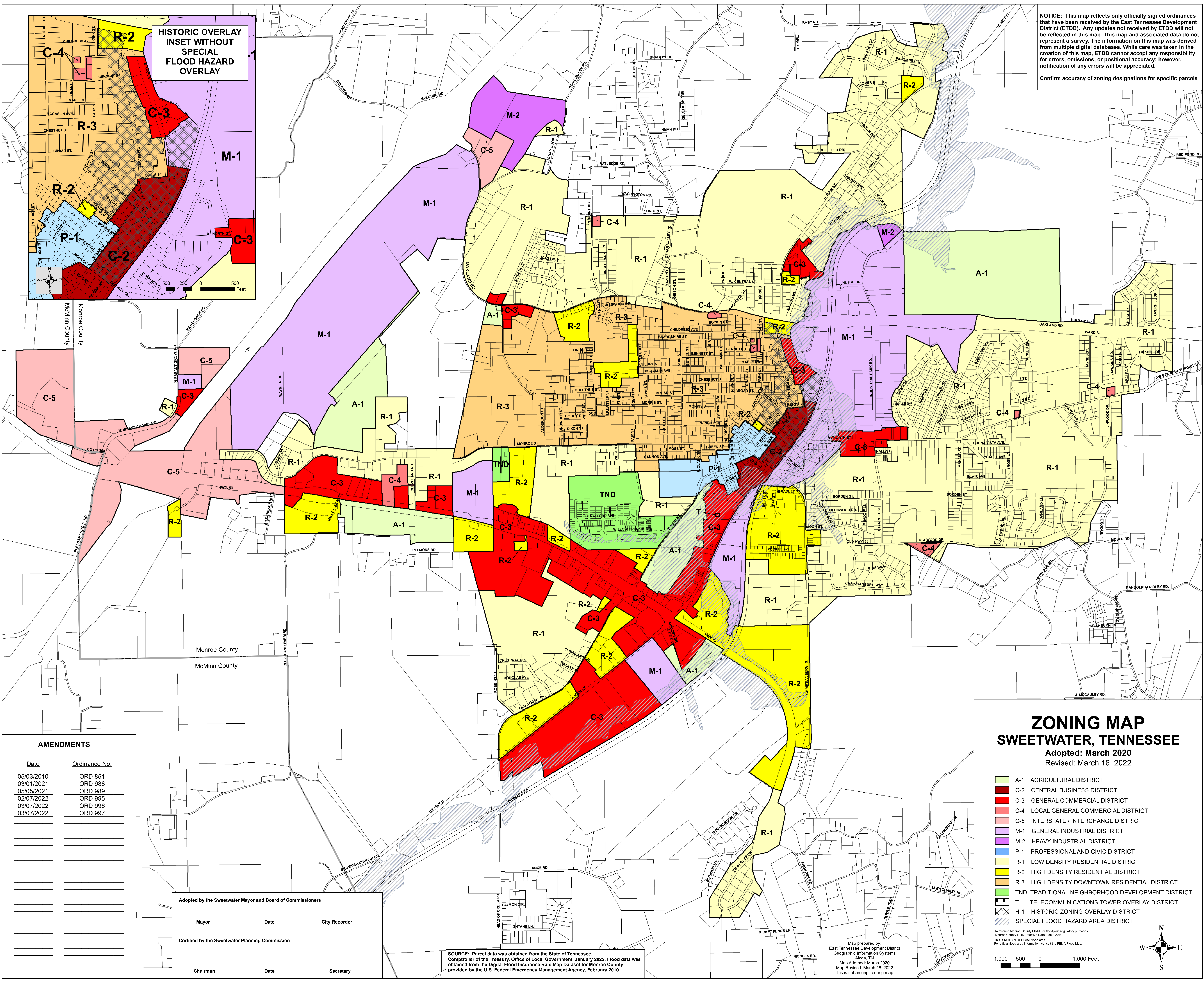


NOTICE: This map reflects only officially signed ordinances that have been received by the East Tennessee Development District (ETDD). Any updates not received by ETDD will not be reflected in this map. This map and associated data do not represent a survey. The information on this map was derived from multiple digital databases. While care was taken in the creation of this map, ETDD cannot accept any responsibility for errors, omissions, or positional accuracy; however, notification of any errors will be appreciated.

Confirm accuracy of zoning designations for specific parcels

HISTORIC OVERLAY INSET WITHOUT SPECIAL FLOOD HAZARD OVERLAY



AMENDMENTS

Date	Ordinance No.
05/03/2010	ORD 851
03/01/2021	ORD 988
05/05/2021	ORD 989
02/07/2022	ORD 995
03/07/2022	ORD 996
03/07/2022	ORD 997

Adopted by the Sweetwater Mayor and Board of Commissioners

Mayor	Date	City Recorder

Certified by the Sweetwater Planning Commission

Chairman	Date	Secretary

SOURCE: Parcel data was obtained from the State of Tennessee, Comptroller of the Treasury, Office of Local Government, January 2022. Flood data was obtained from the Digital Flood Insurance Rate Map Dataset for Monroe County provided by the U.S. Federal Emergency Management Agency, February 2010.

**ZONING MAP
SWEETWATER, TENNESSEE**

Adopted: March 2020
Revised: March 16, 2022

- A-1 AGRICULTURAL DISTRICT
- C-2 CENTRAL BUSINESS DISTRICT
- C-3 GENERAL COMMERCIAL DISTRICT
- C-4 LOCAL GENERAL COMMERCIAL DISTRICT
- C-5 INTERSTATE / INTERCHANGE DISTRICT
- M-1 GENERAL INDUSTRIAL DISTRICT
- M-2 HEAVY INDUSTRIAL DISTRICT
- P-1 PROFESSIONAL AND CIVIC DISTRICT
- R-1 LOW DENSITY RESIDENTIAL DISTRICT
- R-2 HIGH DENSITY RESIDENTIAL DISTRICT
- R-3 HIGH DENSITY DOWNTOWN RESIDENTIAL DISTRICT
- TND TRADITIONAL NEIGHBORHOOD DEVELOPMENT DISTRICT
- T TELECOMMUNICATIONS TOWER OVERLAY DISTRICT
- H-1 HISTORIC ZONING OVERLAY DISTRICT
- SPECIAL FLOOD HAZARD AREA DISTRICT

Reference Monroe County FIRM For floodplain regulatory purposes.
Monroe County FIRM Effective Date: Feb 3, 2010
This is NOT AN OFFICIAL flood area.
For official flood area information, consult the FEMA Flood Map.

Map prepared by:
East Tennessee Development District
Geographic Information Systems
Alcoa, TN
Map Adopted: March 2020
Map Revised: March 16, 2022
This is not an engineering map.

1,000 500 0 1,000 Feet